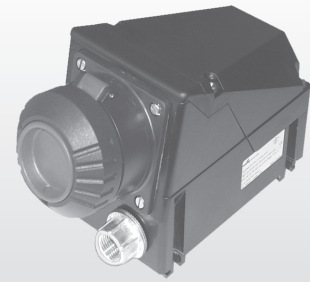


Explosion protected plug and socket system 20 A, 3-pole, 4-pole, 5-pole, GHG 511 in UL - listed design

Class I Zone 1
Class I Div. 2 Group A,B,C,D
Class II Div. 1 Group E,F,G (CSA)
Class II Div. 2 Group F,G



GHG 511 45



GHG 511 75



Annex to operating instructions



CAUTION

Read these annex to operating instruction sheet and the original operating instructions

"GHG 510 7001 P0001" completely, all sheets, before wiring and use.

WARNING

Do not alter this product in any way.

Doing so may lead to serious injury or death.

To avoid dangerous overheating, do not use aluminium wiring. Use copper wire only.

To avoid electrical shock electrical power must be "off" before and during installation, inspection and maintenance.

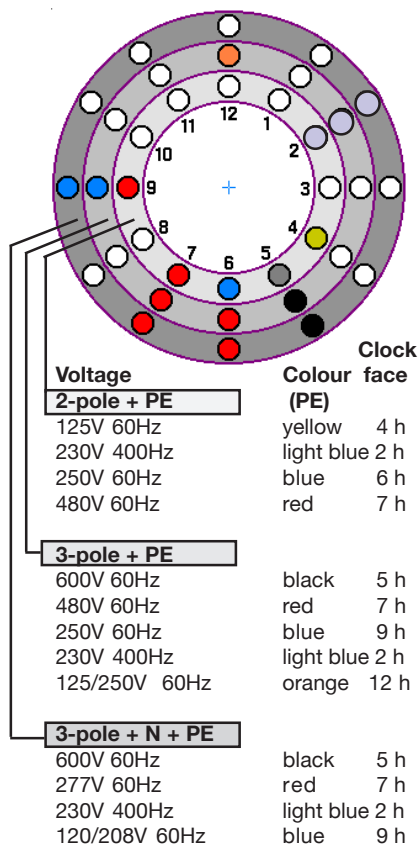
To avoid electrical shock, always disconnect primary power source before opening device or enclosure for inspection or service.

Observe the national safety rules and regulations.

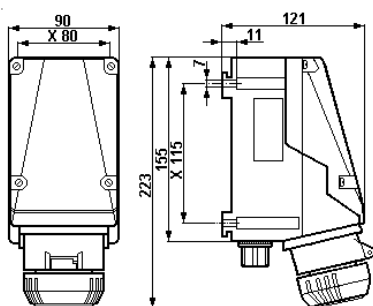
Annex to operating instructions

Plug and socket system 20A, GHG 511

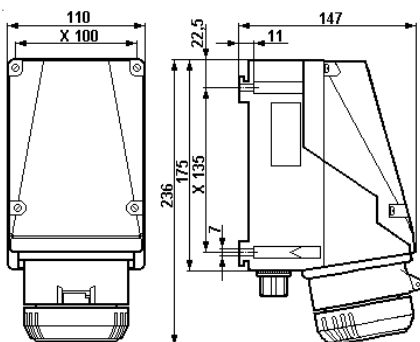
Code for voltage and No. of poles
acc. to UL



Dimensions in mm
X = fixing dimensions



Wall socket 3-pole



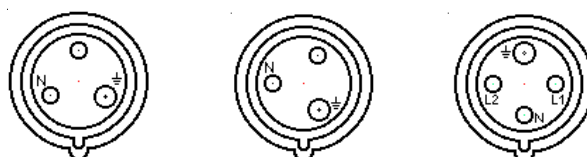
Wall socket 4-pole and 5-pole

1 Technical data

1.1 Plug and socket GHG 511

Explosion category:			
for USL		AEx de II C T6 / T5	
for CNL		Ex de II C T6 / T5	
Certifications and Compliances:			
for USL		Class I, Zone 1 and 2	
	Class I, Division 2 -	Groups A, B, C and D	
	Class II, Division 2 -	Groups F and G	
for CNL		Class I, Zone 1 and 2	
	Class I, Division 2 -	Groups A, B, C and D	
	Class II, Division 1 -	Groups E, F and G	
Rated voltage:			
3-pole		up to 480 V, 60 Hz	
4-pole		up to 600 V, 60 Hz	
5-pole		up to 480 V, 60 Hz	
Rated current:		max. 20 A	
Back-up fuse:			
without thermal protection		max. 20 A	
with thermal protection		max. 35 A gL	
Switching capacity 3-pole:		277 V / 3 HP, 60 Hz	
Switching capacity 4-pole:		600 V / 10 HP, 60 Hz	
Switching capacity 5-pole:		600 V / 10 HP, 60 Hz	
Perm. ambient temperature:		-20° C to +40° C	
Special versions permit deviating temperatures.			
Perm. storage temperature in original packing:		-55° C to +80° C	
Protection category acc. to EN 60529/IEC 529			
with closed and secured hinged cover as well		IP 66 (catalogue version)	
as combinations properly plugged together		I - is complied with by the devices	
Insulation class acc. to EN 60598/IEC 598:			
Cable entry: (catalogue version)			
Wall socket		2x M20, (1x hub M20/1/2"NPT, 1x blanking plug)	
plug	3-pole	Ø 8 - 19 mm	
plug	4-pole	Ø 8 - 21 mm	
plug	5-pole	Ø 12 - 21 mm	
Supply terminal:		Cross section	
Wall socket		2 x AWG 16 - 12	
Flange socket		10 mm	
Flange socket		2 x AWG 16 - 12	
Flange socket		10 mm	
Plug		1 x AWG 17 - 14	
Plug		9 mm	
Test torques:			
Cover screws		22.0 Lb-in.	
Terminals wall-; flange socket		22.0 Lb-in.	
Terminals plug		13.2 Lb-in.	
Self-cutting screws size 4		14.2 Lb-in.	
Self-cutting screws size 5		26.0 Lb-in.	
Weight:			
Wall socket	3-pole	GHG 511 43	approx.1.40 kg (incl. hub M20)
Plug	3-pole	GHG 511 73	approx.0.27 kg
Flange socket	3-pole	GHG 511 83	approx.0.38 kg
Wall socket	4-pole	GHG 511 44	approx.1.87 kg (incl. hub M20)
Plug	4-pole	GHG 511 74	approx.0.34 kg
Flange socket	4-pole	GHG 511 84	approx.0.53 kg
Wall socket	5-pole	GHG 511 45	approx.1.92 kg (incl. hub M20)
Plug	5-pole	GHG 511 75	approx.0.38 kg
Flange socket	5-pole	GHG 511 85	approx.0.58 kg
Auxiliary contact:			
Rated voltage:		250 VAC	
Rated current:		AC / 5 A	
		DC / 0.03 A	

1P + N + 4h 1P + N + 5h 2P + N + 12h

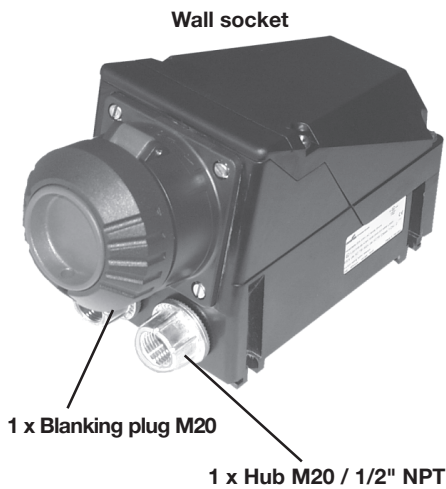


Front view of contact tubes of socket-outlet or connector

Arrangement of contact tubes - Series II

Annex to operating instructions

Plug and socket system 20A, GHG 511



2 Use / Properties

This pin and sleeve device conforms to international Electrical Commission Standards IEC 301-1 and 309-2 Series II. The arrangement of pins, sleeves and keys in this device is such that the device cannot be mated with an IEC 309-2 device of a different voltage, current or system rating.

3 Notice

For installation only by qualified electrician in accordance with the National Electric Code, Canadian Electric Code, applicable local codes and the instructions.

Select proper wire size and type for load and application. Refer to National Electric Code, Article 400, for wire information.

4 Conformity with standards

The plugs and sockets meet the requirements of the following standards:

USL indicates investigation to UL 2279 and UL 98.
UL 1682 and 1686 Industrial plugs and sockets.

CNL indicates investigation to CSA 22.2 No. 14, No. 182.1; CAN / E79-0-95, CAN / E79-1-95, CAN / E79-7-95, and CAN / E 1241-1-1-95.

5 Field of application

The plugs and sockets GHG 511 are suitable for use in:

Class I, Zone 1 and 2
Class I, Division 2 - Groups A, B, C and D
Class II, Division 2 - Groups F and G (UL)
Class I, Zone 1 and 2
Class I, Division 2 - Groups A, B, C and D
Class II, Division 1 - Groups E, F and G (cUL)

7 Grounding instructions

If a metallic conduit system is used to provide the equipment ground to the wall socket:

Secure the provided green and yellow "pigtail" to the ground screw on internal earth plate.

Then secure the opposite end to a ground terminal block inside the box. The pigtail completes the grounding path to the wall socket terminal.

If a separate equipment grounding conductor in the conduit is used:

The grounding conductor must be connected to the ground terminal block inside the enclosure.

If a METAL closure plug is used to close an unused conduit hole:

A METAL closure plug MUST be grounded (bonded) back to the ground terminal block.

NOTE: Only one conductor per terminal.

6 Conduit instructions

To maintain the environmental rating of the enclosure:

The existing bottom conduit entry holes must be closed with the included hubs along with a 1/2" or 3/4" NPT plug (not included).

Note: The threads in the bottom of the enclosure are metric M20x1.5 or M25x1.5.

Check for secure and tight fit of the KO plugs.

CZ: "Tento návod k použití si můžete vyžádat ve svém matefském jazyce u příslušného zastoupení společnosti Cooper Crouse-Hinds/CEAG ve vaší zemi."

DK: "Montagevejledningen kan oversættes til andre EU-sprog og rekvireres hos Deres Cooper Crouse-Hinds/CEAG leverandør"

E: "En caso necesario podrá solicitar de su representante Cooper Crouse-Hinds/CEAG estas instrucciones de servicio en otro idioma de la Union Europea"

EST: "Seda kasutusjuhendit oma riigikeeles võite küsida oma riigis asuvas asjaomasest Cooper Crouse-Hinds/CEAG esindusest."

FIN: "Tarvittaessa tämän käyttöohjeen käännös on saatavissa toisella EU:n kielellä Teidän Cooper Crouse-Hinds/CEAG - edustajaltanne"

GR:Εαν χρειασθεί, μετα.ραση των οδηγιων χρρησε ως σε αλλη γλωσσα της ΕΕ, μπορεί να ζητηθει απο τον Αντιπροσωπο της Cooper Crouse-Hinds/CEAG"

H: "A kezelési útmutatót az adott ország nyelvén a Cooper Crouse-Hinds/CEAG cég helyi képviselőtől igényelheti meg."

I: "Se desiderate la traduzione del manuale operativo in un'altra lingua della Comunit  a Europea potete richiederla al vostro rappresentante Cooper Crouse-Hinds/CEAG"

LT: Šios naudojimo instrukcijos, išverstos į Jūsų gimtąją kalbą, galite pareikalauti atsakingoje "Cooper Crouse-Hinds/CEAG" atstovybėje savo šalyje.

LV: "Šo ekspluatācijas instrukciju valsts valodā varat pieprasīt jūsu valsts atbildīgajā Cooper Crouse-Hinds/CEAG pārstāvniecībā."

M: Jistgħu jitolbu dan il-manwal fil-lingwa nazzjonali tagħhom mingħand ir-rappreżentant ta' Cooper Crouse Hinds/CEAG f'pajjiżhom.

NL: "Indien noodzakelijk kan de vertaling van deze gebruiksinstructie in een andere EU-taal worden opgevraagd bij Uw Cooper Crouse-Hinds/CEAG - vertegenwoordiging"

P: "Se for necessária a tradução destas instruções de operação para outro idioma da União Europeia, pode solicita-la junto do seu representante Cooper Crouse-Hinds/CEAG"

PL: Niniejszą instrukcję obsługi w odpowiedniej wersji językowej można zamówić w przedstawicielstwie firmy Cooper-Crouse-Hinds/CEAG na dany kraj.

S: "En översättning av denna montage- och skötselinstruktion till annat EU - språk kan vid behov beställas från Er Cooper Crouse-Hinds/CEAG- representant"

SK: "Tento návod na obsluhu Vám vo Vašom rodnom jazyku poskytne zastúpenie spoločnosti Cooper Crouse-Hinds/CEAG vo Vašej krajine."

SLO: "Navodila za uporabo v Vašem jeziku lahko zahtevate pri pristojnem zastopništvu podjetja Cooper Crouse-Hinds/CEAG v Vaši državi."

Cooper Crouse-Hinds GmbH

Neuer Weg - Nord 49
D 69412 Eberbach / Germany
Phone: +49 (0) 6271/806-500
Fax: +49 (0) 6271/806-476
Internet: www.CEAG.de
E-Mail: Info-ex@ceag.de